

Maine Home

May 2010

+DESIGN



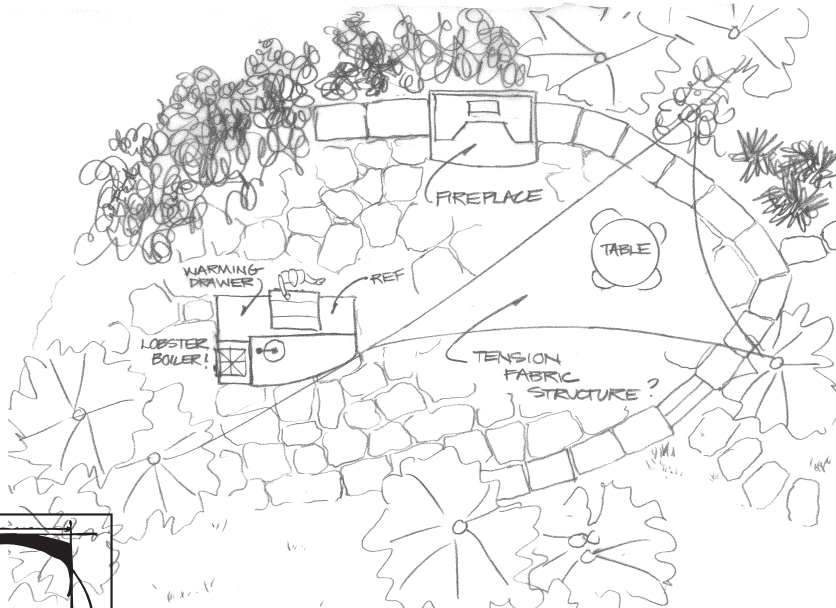
Stone Gables

Memoirs of a
Cape Elizabeth manor house

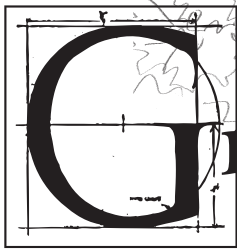
An upside-down tree house
On Portland's East End

John Day & George Kinghorn
Maine's newest art ambassadors

THE DRAWING BOARD



Concept: Knickerbocker Group
Kitchen Design: Elaine Murdoch, CMKBD
Mason: Daniel Ucci
Stone Supplier: J. C. Stone
Landscaping: Back Meadow Farm
Electrical: Oberuch Electric
Outdoor Appliances: Delia Inc.



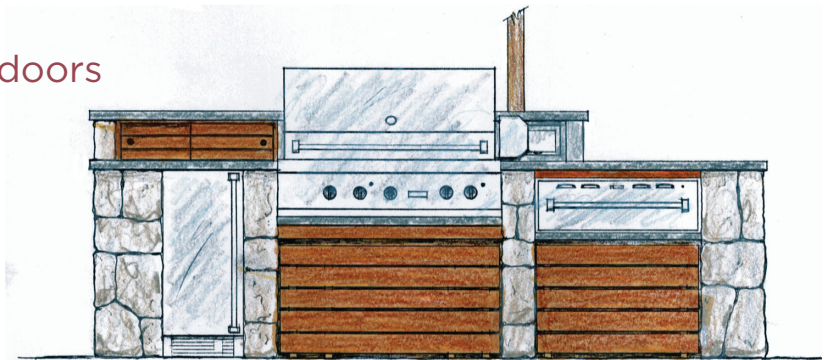
Grotto Gathering

Bringing the living room outdoors

Recognizing the need to inspire ideas for exterior living spaces, Knickerbocker Group has expanded beyond the walls of their traditional showroom to create an outdoor living area known as “the grotto.”

The outdoor room was conceived as a gathering place for entertaining and relaxing. Site work was minimal, serving just to enhance the existing terrain. Amenities include a stone terrace, surrounded by low stone walls for seating, specialty lighting, and a large hand-crafted fireplace as the focal point. Additionally, a multilevel island houses a grill, warming drawer, refrigerator, and a huge wok/cooker burner for boiling lobster, with plenty of countertop space for the preparation and presentation of food.

Whether situated in the midst of beautiful natural surroundings or tucked in among urban neighbors, the addition of a well-designed outdoor living room makes a magnificent contribution to the appeal and livability of any home. **MH+D**



KNICKERBOCKER GROUP:
KNICKERBOCKERGROUP.COM,
207-633-3818