

MHD

MAINE HOME + DESIGN

3 HOMES ACROSS MAINE

MADE FOR ENJOYING THE
SWEET SUMMER SEASON

JULY 2025

ARCHITECT-DOULA KIM
HOLDEN ON BIRTH AS A
DESIGN CHALLENGE



TIPS FOR YOUR MAINE
SUMMER GARDEN

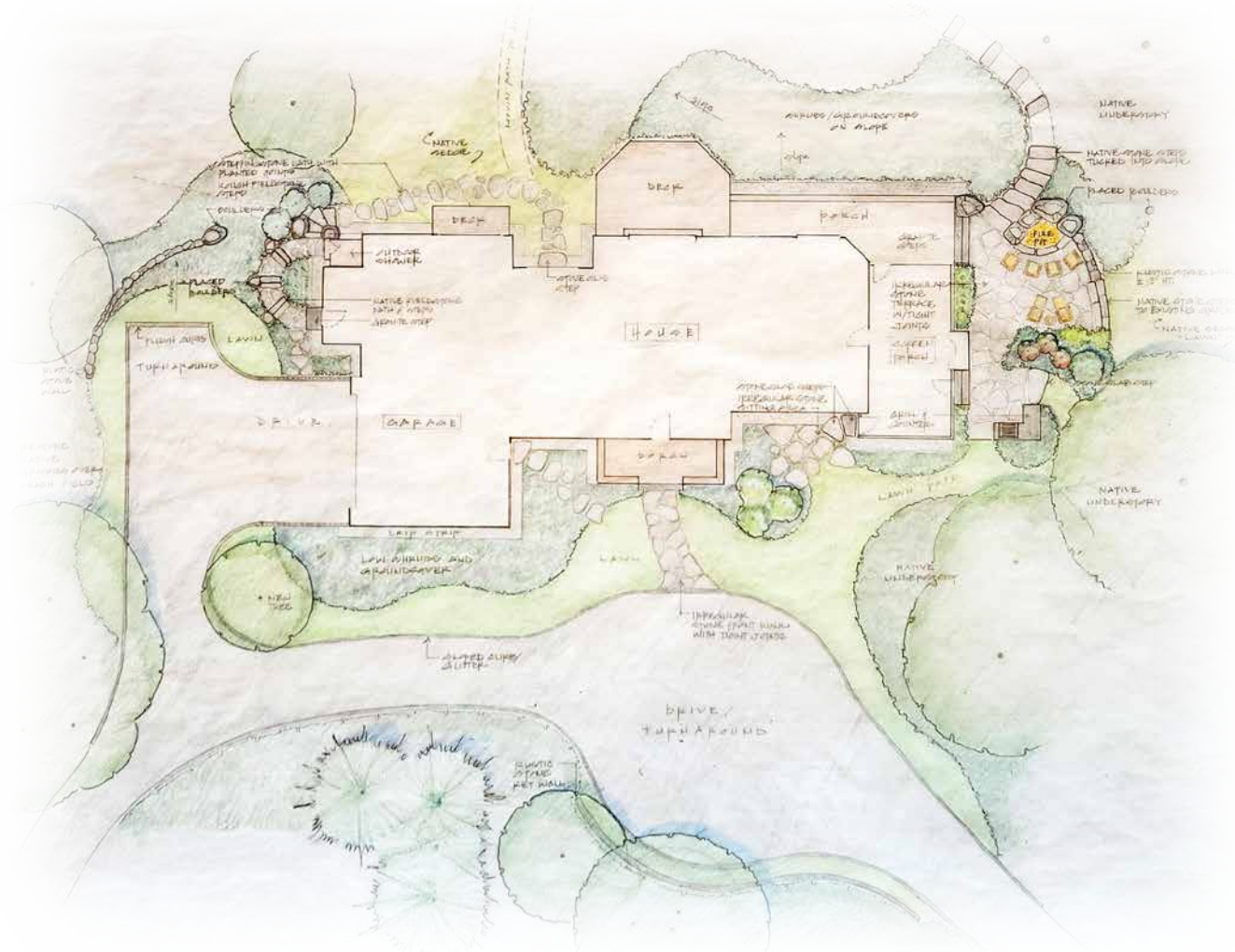


If whole or part of this article is reproduced online, we ask that
a link back to Maine Home+Design be placed. Thank you.

207-772-3373

mainehomedesign.com

Nature's Beauty



From the outset, the homeowners of Sylvan Hill envisioned a high-performance home rooted in Maine's architectural vernacular, blending historic charm with modern sustainability. They hold a deep appreciation for summers spent outdoors, so the landscape design naturally became a central element of their vision.

The resulting design strikes a thoughtful balance between timeless character and ecological responsibility. A meandering driveway winds through a wildflower meadow and a birch copse before arriving at the entry circle and main door, offering a peaceful arrival to the site. Native plantings and pollinator-friendly gardens enrich biodiversity while creating a low-maintenance, seasonally dynamic landscape that matures gracefully over time.

Locally quarried granite was chosen for patios, walkways, and terraces, grounding the home within its coastal surroundings. Covered porches, open decks, and a rustic granite terrace with a fire pit offer a variety of inviting outdoor spaces for gatherings and quiet moments of reflection. The intentional use of textured paving stones adds a rustic character, helping pathways and terraces

blend seamlessly into the existing ledge and wooded edges of the site. Lawn areas were minimized and used only where essential for pathways.

By honoring the site's natural topography and patterns, the landscape design ensures a harmonious integration between built and natural environments, thus preserving the enduring spirit of traditional Maine homesteads. **MH+D**

Location: Coastal Maine
Architect: Knickerbocker Group
Builder: Knickerbocker Group
Interior Designer: Knickerbocker Group
Landscape Architect: Knickerbocker Group
Construction Start: 2021
Construction Complete: 2023